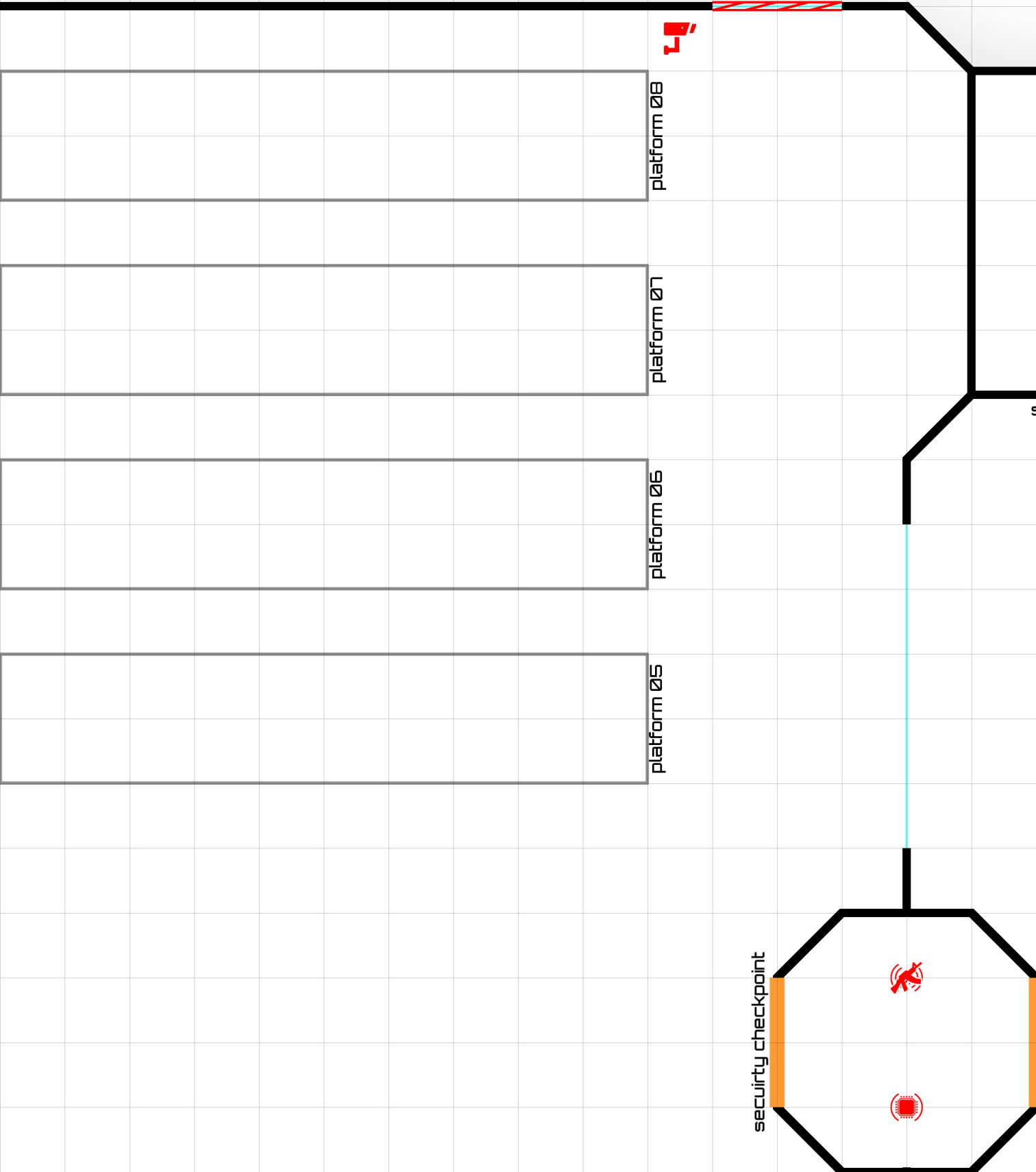
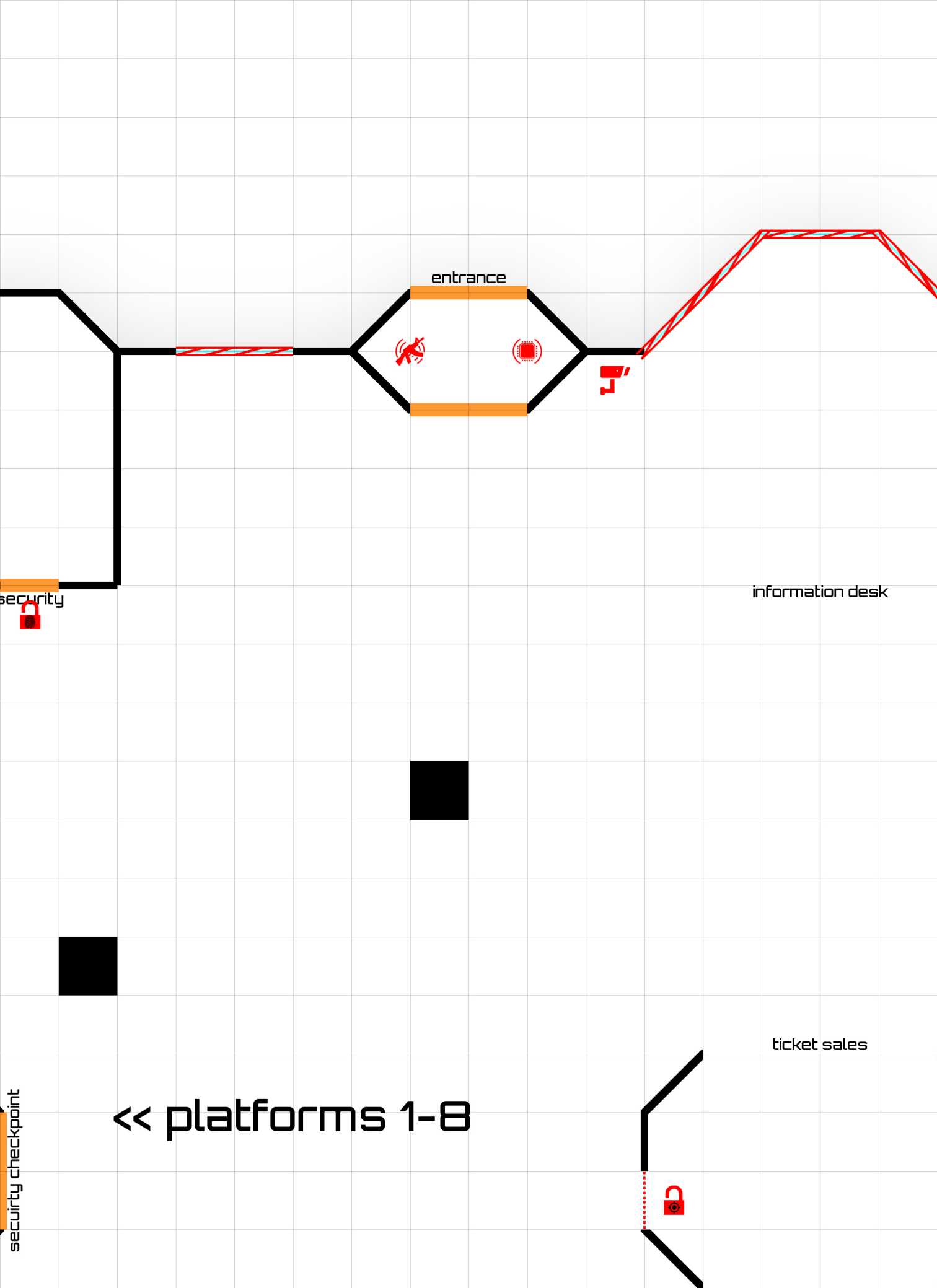


train station // 10

- doors
- windows
- walls

one meter





entrance

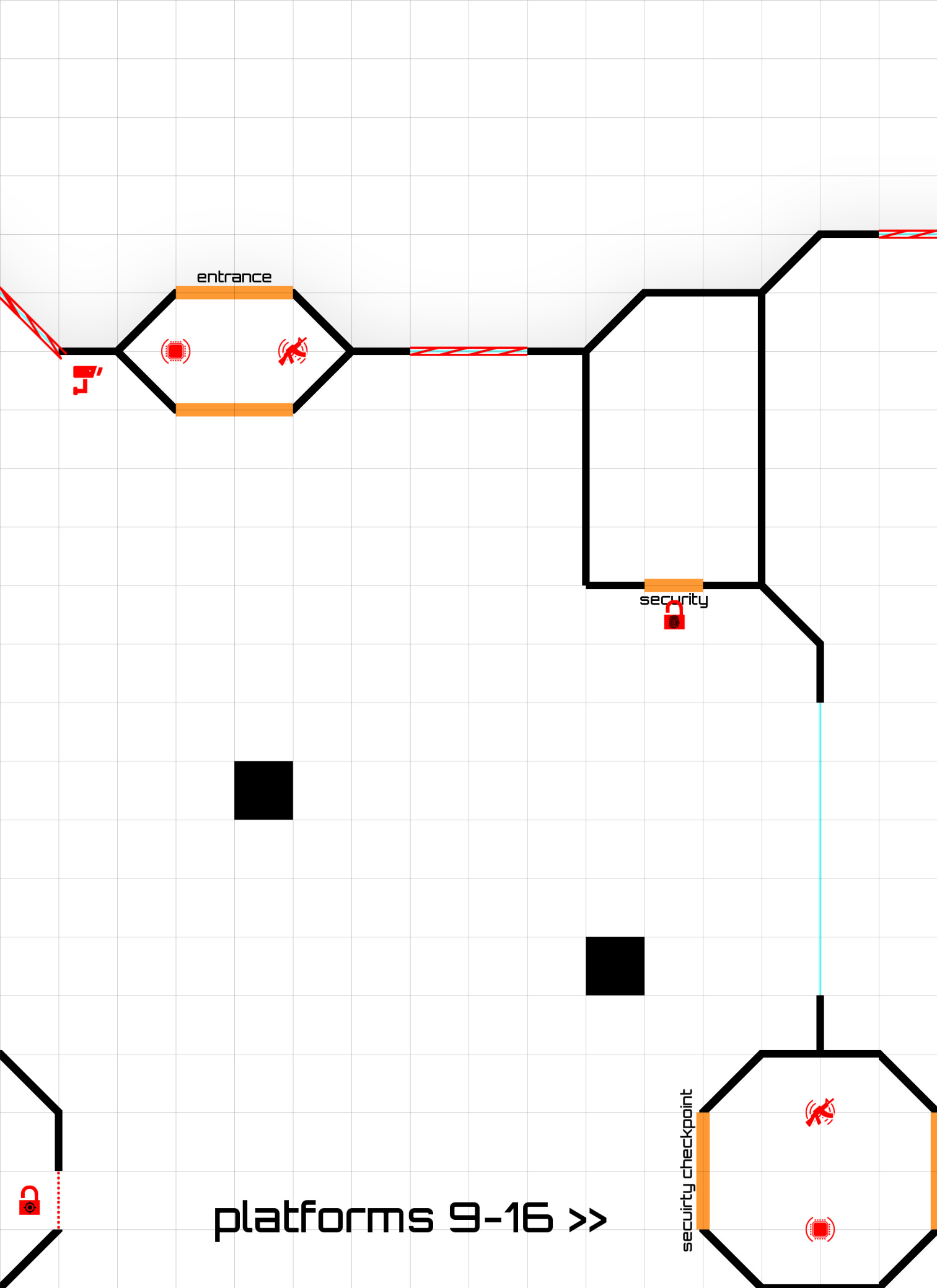
security

information desk

ticket sales

<< platforms 1-8

security checkpoint

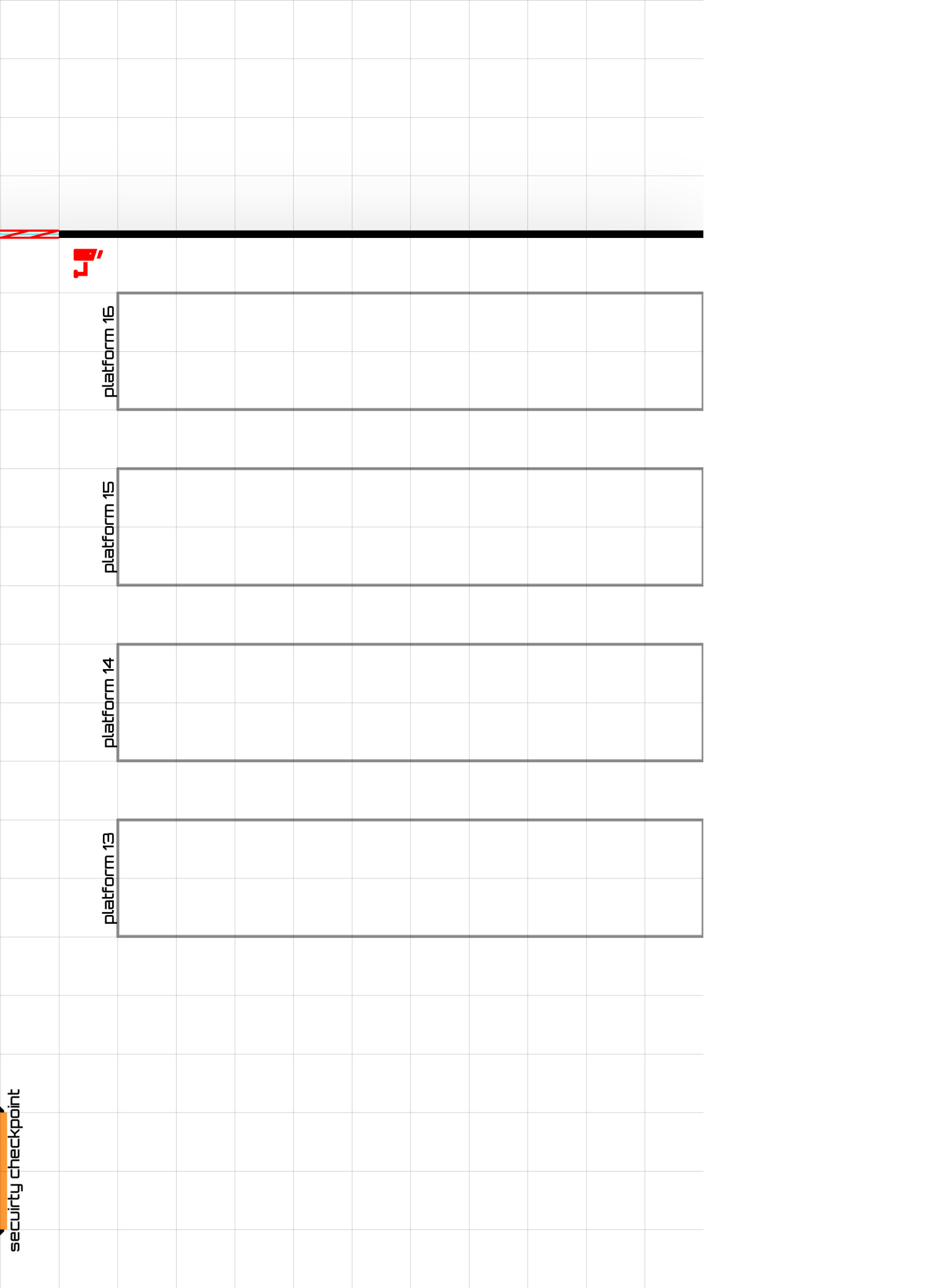


entrance

security

security checkpoint

platforms 9-16 >>

[illegible]

A grid-based diagram showing four platforms (13, 14, 15, 16) arranged vertically. A red robot icon is positioned to the left of platform 16. A security checkpoint label is located at the bottom left. The grid is composed of light gray lines on a white background.

[illegible]

The diagram illustrates a security checkpoint layout on a grid background. A thick black horizontal line spans the width of the grid near the top. Below this line, four rectangular platforms are positioned vertically, each labeled on its left side:

- platform 13
- platform 14
- platform 15
- platform 16

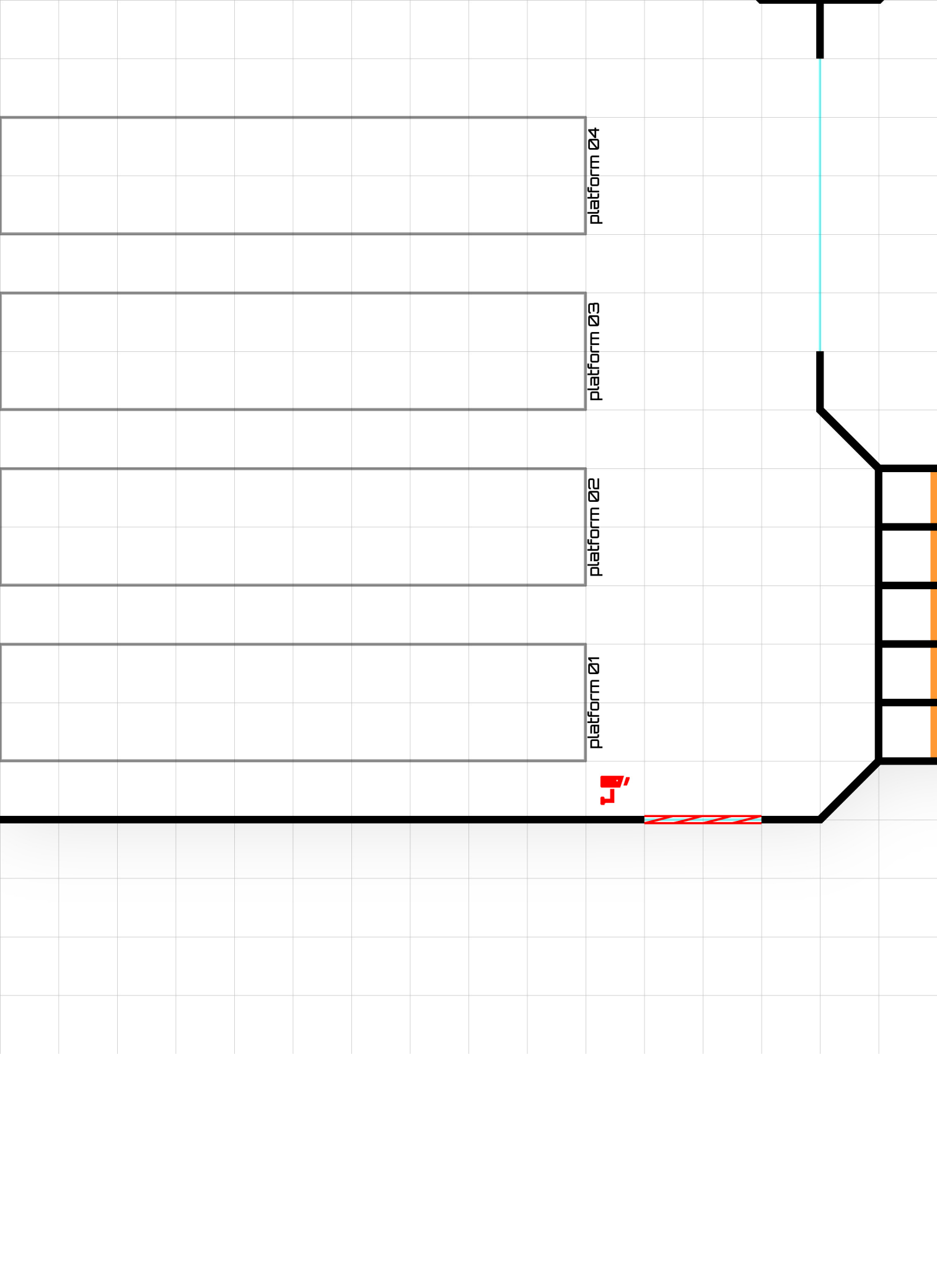
To the left of platform 16, there is a red icon representing a person walking towards the right.

A grid-based diagram showing four platforms (13, 14, 15, 16) arranged vertically. A red robot icon is positioned to the left of platform 16. A security checkpoint label is located at the bottom left. The grid is composed of light gray lines on a white background.

A grid-based diagram showing four platforms (13, 14, 15, 16) and a security checkpoint. The platforms are represented by horizontal rectangles. Platform 13 is the leftmost, followed by 14, 15, and 16. A security checkpoint is located to the left of platform 13, indicated by a red icon and the text 'security checkpoint'. A red line with a diagonal slash is positioned to the left of the security checkpoint. The entire diagram is set against a light gray grid background.

A grid-based diagram showing four platforms (13, 14, 15, 16) and a security checkpoint. The platforms are represented by horizontal rectangles. Platform 13 is the leftmost, followed by 14, 15, and 16. A security checkpoint is located to the left of the platforms, indicated by a red icon and the text 'security checkpoint'. A red line with a diagonal slash is positioned to the left of the security checkpoint. The entire diagram is set against a light gray grid background.

A grid-based diagram showing four platforms (13, 14, 15, 16) and a security checkpoint. The platforms are represented by horizontal rectangles. Platform 13 is the leftmost, followed by 14, 15, and 16. A security checkpoint is located to the left of the platforms, indicated by a red icon and the text 'security checkpoint'. A red line with a diagonal slash is positioned to the left of the security checkpoint. The entire diagram is set against a light gray grid background.





restroom

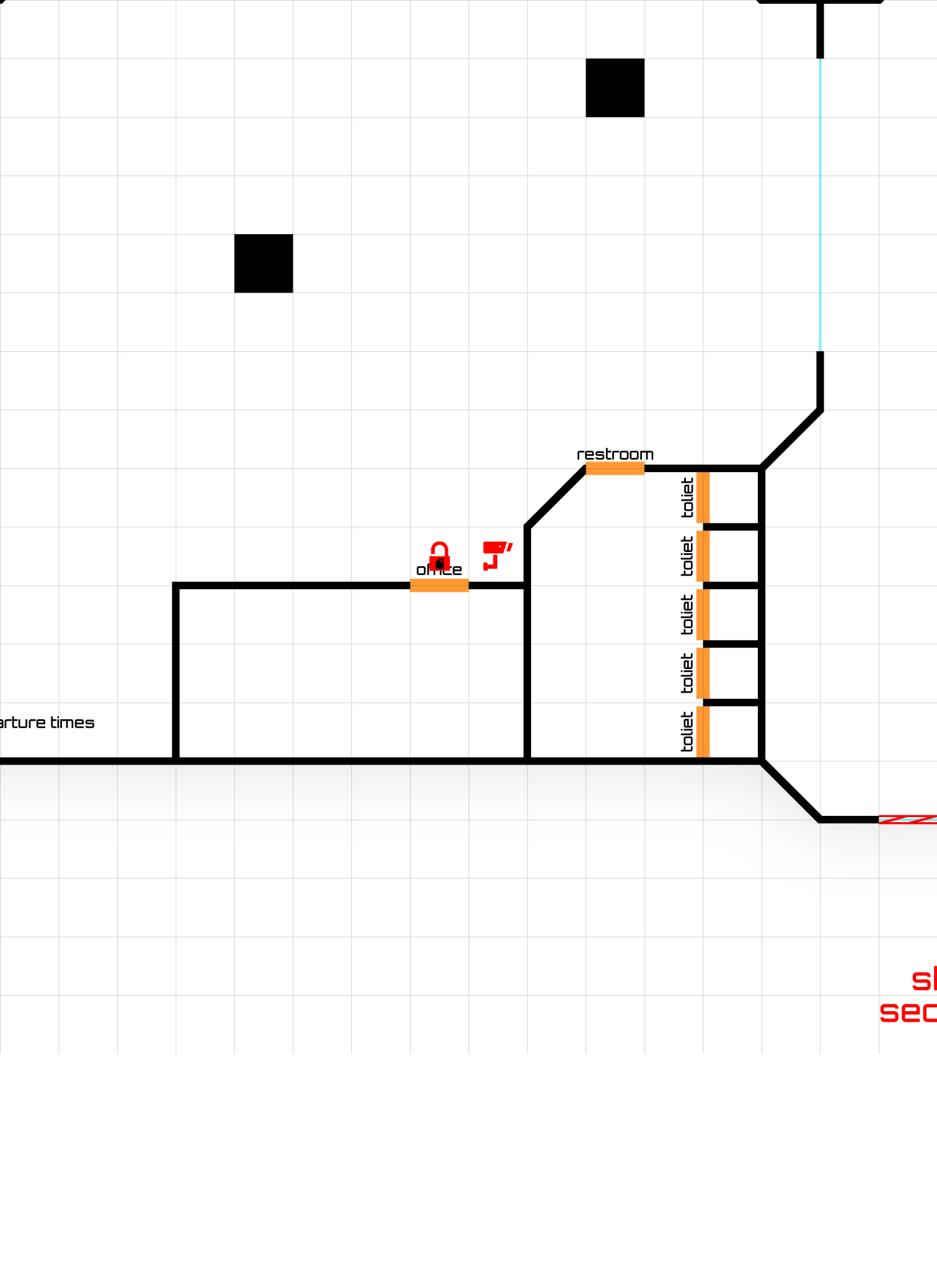
toilet
toilet
toilet
toilet
toilet
toilet



office

arrival times

depart



arture times

office

restroom

toilet

toilet

toilet

toilet

toilet

sh
sec

shadowrun 5e security overlay



platform 09

platform 10

platform 11

platform 12

[legend]

detection.



pressure sensor
SRS 361



camera
SRS 361



trip beam
SRS 360



wire alarm
SRS 360



Magnetic Anomaly Detector
SRS 362



Millimeter Wave Detector
SRS 362



motion sensor
SRS 361



olfactory scanner
SRS 361



sound detector
SRS 361

locks.



cardreader
SRS 359



keypad
SRS 359



transponder
SRS 359



key
SRS 359



facial recognition
SRS 360



dna scanner
SRS 360



voice recognition
SRS 360



print scanner
SRS 360